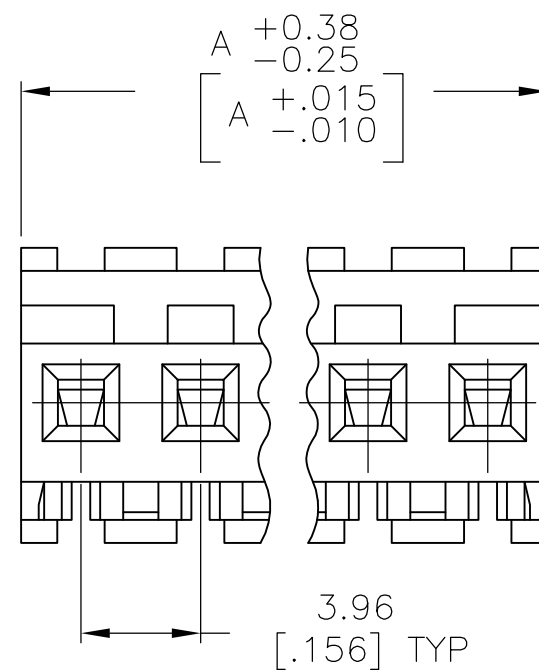
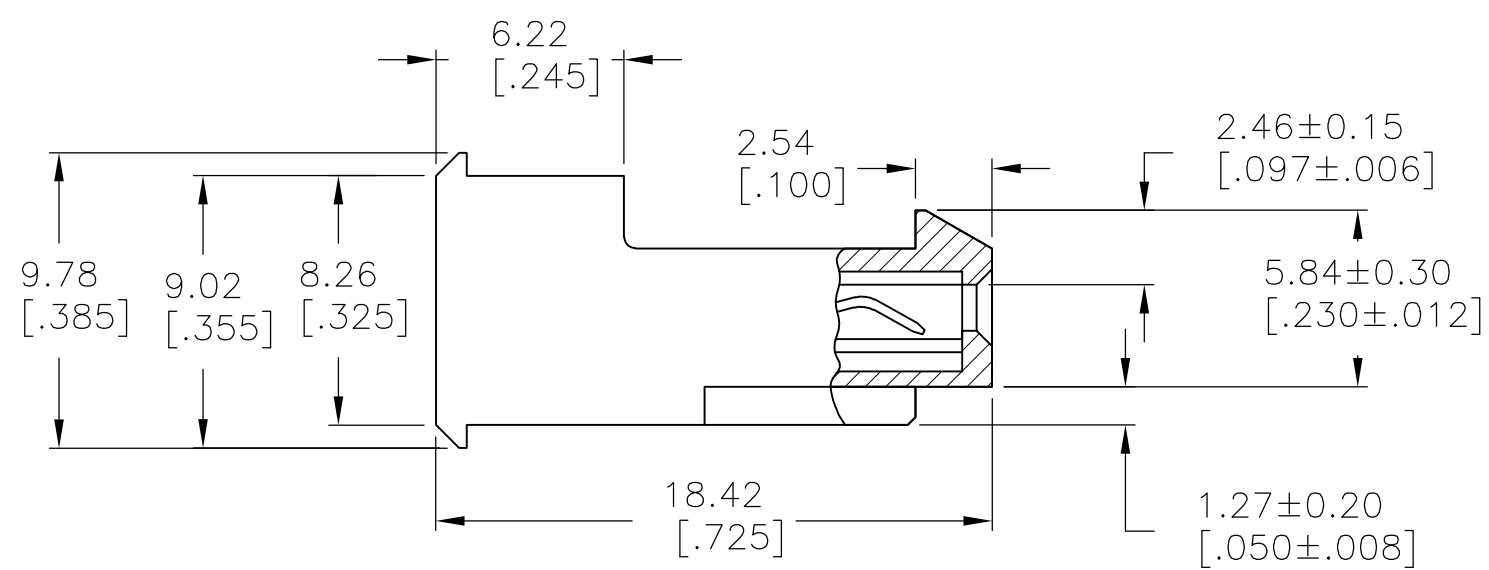
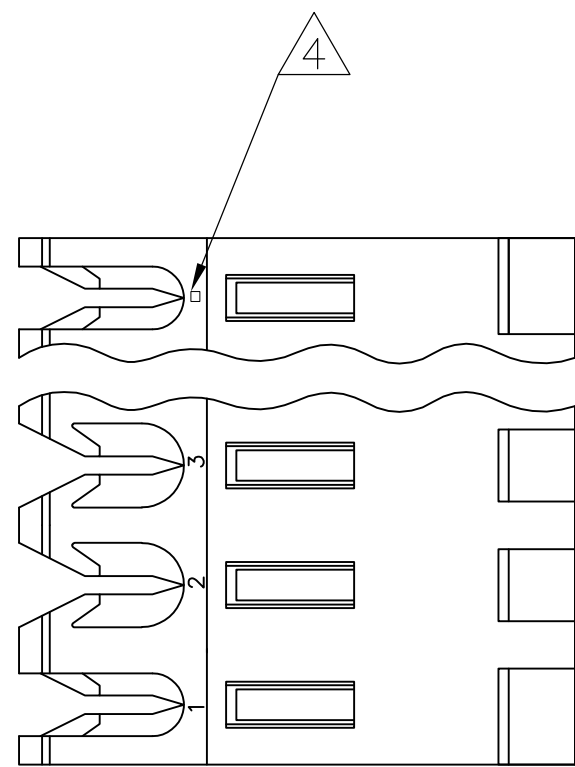


THIS DRAWING IS UNPUBLISHED. RELEASED FOR PUBLICATION
 © COPYRIGHT BY TYCO ELECTRONICS CORPORATION. ALL RIGHTS RESERVED.

LOC	DIST	REVISIONS					
CM	00	P	LTR	DESCRIPTION	DATE	DWN	APVD
		Y		ECO-07-012870	14JUN07	KW	DB



1 MATERIAL: CONNECTOR - NYLON UL94V-2 (ORANGE).
 CONTACTS - 0.00076 [.000030] GOLD IN CONTACT AREA WITH BRIGHT TIN-LEAD FOR -2 THRU -28, MATTE WHISKER MITIGATED TIN FOR 3-641227-2 THRU 5-641227-4 OVER NICKEL UNDERPLATE.

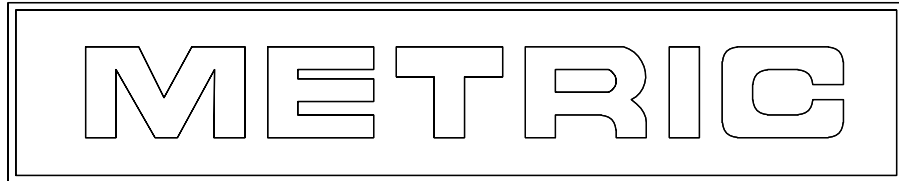
- 2. CONTACTS ACCEPT 18 AWG WIRE WITH 2.41[.095] MAX INSULATION DIAMETER.
- 3. CONTACTS MUST ACCEPT 1.14±0.03 [.045±.001] SQUARE POST AND REMAIN LOCKED IN POSITION.

4 IDENTIFICATION NUMBER FOR LAST CIRCUIT MAY NOT APPEAR ON ALL ASSEMBLIES.

5. DIMENSIONS IN BRACKETS ARE IN INCHES.

6. HOUSING FEATURES ARE: FEED-THRU WITH LOCKING RAMP.

95.10 [3.744]	24	5-641227-4
91.14 [3.588]	23	5-641227-3
87.17 [3.432]	22	5-641227-2
83.21 [3.276]	21	5-641227-1
79.25 [3.120]	20	5-641227-0
75.29 [2.964]	19	4-641227-9
71.32 [2.808]	18	4-641227-8
67.36 [2.652]	17	4-641227-7
63.40 [2.496]	16	4-641227-6
59.44 [2.340]	15	4-641227-5
55.47 [2.184]	14	4-641227-4
51.51 [2.028]	13	4-641227-3
47.55 [1.872]	12	4-641227-2
43.59 [1.716]	11	4-641227-1
39.62 [1.560]	10	4-641227-0
35.66 [1.404]	9	3-641227-9
31.70 [1.248]	8	3-641227-8
27.74 [1.092]	7	3-641227-7
23.77 [.936]	6	3-641227-6
19.81 [.780]	5	3-641227-5
15.85 [.624]	4	3-641227-4
11.89 [.468]	3	3-641227-3
7.92 [.312]	2	3-641227-2
95.10 [3.744]	24	2-641227-4
91.14 [3.588]	23	2-641227-3
87.17 [3.432]	22	2-641227-2
83.21 [3.276]	21	2-641227-1
79.25 [3.120]	20	2-641227-0
75.29 [2.964]	19	1-641227-9
71.32 [2.808]	18	1-641227-8
67.36 [2.652]	17	1-641227-7
63.40 [2.496]	16	1-641227-6
59.44 [2.340]	15	1-641227-5
55.47 [2.184]	14	1-641227-4
51.51 [2.028]	13	1-641227-3
47.55 [1.872]	12	1-641227-2
43.59 [1.716]	11	1-641227-1
39.62 [1.560]	10	1-641227-0
35.66 [1.404]	9	641227-9
31.70 [1.248]	8	641227-8
27.74 [1.092]	7	641227-7
23.77 [.936]	6	641227-6
19.81 [.780]	5	641227-5
15.85 [.624]	4	641227-4
11.89 [.468]	3	641227-3
7.92 [.312]	2	641227-2
DIM A	NO OF CIRCUITS	PART NO



THIS DRAWING IS A CONTROLLED DOCUMENT.

DIMENSIONS: mm [INCHES]	TOLERANCES UNLESS OTHERWISE SPECIFIED:	DWN B. LEWIS 12 FEB 91	Tyco Electronics Corporation Harrisburg, Pa 17105-3608
		CHK R. SWING 12 FEB 91	
		APVD D. CLARK 20 FEB 91	NAME MTA-156 CONNECTOR ASSEMBLY, 18 AWG, STANDARD
		PRODUCT SPEC 108-1051	
		APPLICATION SPEC 114-1020	SIZE A2
MATERIAL 1	FINISH 1	WEIGHT -	CAGE CODE 00779
		CUSTOMER DRAWING	DRAWING NO C=641227
			RESTRICTED TO -
			SCALE 4:1 SHEET 1 OF 1 REV Y